

THE Current

SHADOW CREEK RANCH

April 2011

Official Publication of the Shadow Creek Ranch

Volume 3, Issue 4

Shadow Creek Ranch HOA

Is Hosting it's

*1st Annual
Spring Fling!*

**Village of Diamond Bay
(pavilion) April 8, 2011**

6:00 pm - 8:00 pm

"Spring Fling Fair" will consist of face painting, cake-walk, Karaoke, and prize wheel.

Children 0-8 years of age will participate in an Easter Egg Hunt, please bring your own basket.

Please contact Bobbie Lopez if interested in participating or volunteering at blopez@amitx.com



Councilman's Corner

The population of our city exploded from the year 2000 to the year 2010. In 2000, the City of Pearland had 37,640 residents. According to figures recently released by the U.S. Census Bureau, Pearland now has a population of 91,252, an increase of over 142.4% since 2000. Pearland is the 2nd fastest growing city in the State of Texas. Your City Council continues to work to ensure that the needs of all of the residents are being met. Due to economic conditions we have been unable to proceed with projects as quickly as had initially been planned. Economic indicators are ticking upwards so we are hopeful that we will begin to move forward with delayed road, park and infrastructure projects, including the Shadow Creek Ranch Sports Complex approved by voters in 2007. The current Capital Improvement Plan calls for design and engineering for the SCR Park to occur in 2012 with construction set to begin in 2013. This time frame is not set in stone and could be affected by economic conditions. I intend to hold the City to these deadlines and will try to push the timetable up where feasible. As we head into the budget process later this year, it is important that the City Council know that this park project is a priority. I encourage you to contact the entire Council by email at council@ci.pearland.tx.us to make your opinion heard.

Upcoming events to put on your calendar:

- Fire Station Number 5 is now open. The Fire Station is located on Kirby Drive and is staffed 24 hours a day. A grand opening/open house for the new facility has been set for Saturday, April 2nd at 9:30 am. I hope you will have a chance to come see the facility and meet someone the brave men and women who protect our City.
- Election Day is Saturday, May 14th. Early voting will run from May 2 – May 10. There will be two early voting locations in Pearland, the Westside Events Center (2150 Countryplace Pkwy) and the JP Precinct 3/2 Courtroom (2436 S. Grand Blvd). Election Day locations will be listed on the City of Pearland website (www.cityofpearland.com) and in local newspapers. Among the races on the ballot are Mayor, Councilmember Position 3 and Alvin ISD School Board members. Take time to learn about the candidates and let your voice be heard.

I continue to be honored to serve as your voice on the Council. Please do not hesitate to contact me with issues, concerns or ideas.

Scott Sherman, Mayor Pro-Tem
City of Pearland
sherman.scottj@gmail.com
Facebook: "Councilman Scott Sherman"

IMPORTANT NUMBERS

EMERGENCY NUMBERS

EMERGENCY	911
Fire.....	911
Ambulance.....	911
Sheriff – Non-Emergency.....	281-331-9000
Pearland Police Department	281-997-4100

SCHOOLS

Mary Marek Elementary	281-245-3232
Laura Ingalls Wilder Elementary	281-245-3090
Manvel Junior High	281-331-1416
Alvin Senior High	281-331-8151
Manvel High School	281-245-2235
Alvin ISD Administration	281-338-1130
Alvin ISD Transportation	281-331-0960

UTILITIES

Electricity - Reliant Energy.....	713-207-7777
Gas - Center Point	713-659-2111
Trash Removal - City of Pearland	281-652-1600

OTHER NUMBERS

Pearland Post Office	281-485-2132
Poison Control.....	800-764-7661
Brazoria County Health Department	979-864-1484
Animal Control.....	281-756-2265
Cable/Internet/Phone...COMCAST	713-341-1000

CITY

Pearland City Hall.....	281-652-1600
Pearland Utility Billing - Water Dept.	281-652-1603
Pearland Animal Control.....	281-652-1970
Pearland Police Dept - Non-Emergency	281-652-1100
Pearland Public Works.....	281-652-1900

NEWSLETTER

Articles.....	shadowcreekrancho@peelinc.com
Publisher	
Peel, Inc.	1-888-687-6444
Advertising.....	1-888-687-6444

MGMT COMPANY

ASSOCIATION MANAGEMENT, INC.

Community Manager	
Maria Southall-Shaw.....	713-332-4675
On-Site Manager	
Bobbie Lopez.....	832-436-5215
Community Liaison Manager	
Holly Blesener	713-332-4681
Service Specialist	
Erin Reina	713-332-4685
Property Maintenance	
Mark Simien.....	832-276-2488

www.AMITX.com

Stork Report in Shadow Creek Ranch

Armaan M. Ahmed

Born: 02/17/11 @7pm, 5 lbs 17 oz

Blessed Parents: Humera & Mohamed
Ashfaq Ahmed

Happy Siblings: Adeeb, Ayman, &
Aminah Ahmed



Business Classifieds

LESS THAN A PENNY: You can run a business classified in The Current and reach all of Shadow Creek Ranch for less than a penny per home. Call 512-263-9181 for details.

ALL MY SONS MOVING & STORAGE



Same Day Service
24 Hours, 7 Days a Week
Licensed & Insured
www.allmysons.com

For Free Friendly Estimates
& Advice, Call:

832-226-5010

Customer Satisfaction
is Our #1 Goal!

Let Our Family Move Yours!



MC 501473C • USDOT 1296282
TXDOT 6252035C

All My Sons Moving & Storage of Houston, Inc.
"Your Neighborhood Movers!"

Local Moving Experts

- Furniture Quilt-Pad Wrapped at No Extra Charge
- Furniture Placed & Set-up in Your New Home
- Quality Service at Sensible Rates
- Professional Piano Movers
- Courteous & Professionally Trained Personnel
- We DO NOT Require All Drawers to be Emptied
- Complete Packing & Unpacking Services Offered

Low Storage Rates

- Modern Warehouse Facility
- Climate Controlled
- Sanitized Private Vaults
- Reliable In-Home Inventory
- Air Conditioned Storage Available

Long Distance

- Guaranteed Price & Service
- Direct Service to All Points in USA

Office/Industrial

- Corporate Relocation
- Record Retention
- International

SHADOW CREEK RANCH

Allergies Achoo!

By: Holly Blesener

It is spring time and that means new beginnings, rain showers, flowers and with those flowers, pollen. Allergy sufferers might enjoy the beautiful blooms of spring but they also are looking for relief from allergy symptoms.

Allergies are caused by your body's over-reaction to allergens. Allergens are found in many things including tree pollen, grass, pet dander, mold and weeds.

Americans spend over 4 billion dollars on over the counter medicines to control allergies. There are a few, simple things that one can do to help alleviate allergy symptoms and maybe save you some money at the pharmacy.

First, rinsing your hands, arms and face after being outside can greatly reduce symptoms by washing away the pollen that sticks to our skin. Also, at the end of the day taking a shower and washing allergens out of your hair and off your body will reduce the amount of allergens on your furniture and bedding.

If you suffer from animal dander allergies and don't want to put your animal friends in quarantine, weekly baths and hypo allergenic animal



bedding will help your furry family members not make you sneeze.

Many home improvement stores carry air filters that offer allergy filtration and are a great investment. Home air quality is easily improved by air filters and dehumidifiers and in the long run will help you live a healthier life.

Mold is another common allergen that people suffer from. You can reduce the amount of mold in your home by removing houseplants and by frequently cleaning shower curtains, bathroom windows, damp walls, areas with dry rot and indoor trash cans. A mix of water and chlorine bleach is a great cleaning mixture for mold.

Lastly, either dry cleaning or washing fabrics in your home can help. Bedding, pillows, drapes, and soft toys are magnets for allergens. Washing bedding and other fabrics in warm water is an easy way to ease household allergies.

So enjoy the warmer weather, the blooms, the new beginnings that spring brings and remember that allergies do not need to be big worry, just a little sneeze here and there.

When You're Ready to Sell Call Your Community Experts!



Cathy Spacek

832-643-7768

cathy@cathyspacek.com

redrock811@aol.com

Top Producer &
Resale Specialist

★ ★ Platinum
2005 2006 Producer

★ ★
2009 2010

*"Puzzled? Let Me Help
You Put the Pieces Together!"*



Ricki Stockwell

713-306-3773

redrock811@aol.com

Top Producer
& Resale Specialist

Platinum ★ ★ ★
Producer 2004 2005 2006

★ ★ ★ ★
2007 2008 2009 2010

*"Measuring Success
One Family at a Time"*

Shadow Creek Ranch Top Producers

*with More SCR Homes Sold
than Any Other Realtors!*

and



**Partnering Expert Knowledge
With Aggressive Marketing Strategy
to Get Your Home Sold!**

SHADOW CREEK RANCH

Shadow Creek Ranch Pool Schedule 2011

<p>EMERALD BAY LAP POOL: 11814 N Clear Lake Loop Closed Mons & Thurs for Maintenance</p> <p>May 28 – 30, 2011 (Memorial Holiday Weekend) Sat - Mon: 12pm – 8pm</p> <p>June 4th – August 21, 2011 (Full Season)</p> <p>Monday: Closed for Maintenance Tuesday: 12pm – 8pm Wednesday: 12pm – 8pm Thursday: Closed for Maintenance Friday: 12pm – 8pm Saturday: 12pm – 8pm Sunday: 12pm – 8pm Adult Lap Swim: Tues., Wed., Fri., 8-9pm 18 and older</p>	<p>REFLECTION BAY DIVING POOL: 12115 S Clear Lake Loop Closed Tuesdays for Maintenance</p> <p>May 28 – 30, 2011 (Memorial Holiday Weekend) Sat - Mon: 12pm – 8pm</p> <p>June 4th – August 21, 2011 (Full Season)</p> <p>Monday: 12pm – 8pm Tuesday: Closed for Maintenance Wednesday: 12pm – 8pm Thursday: 12pm – 8pm Friday: 12pm – 8pm Saturday: 12pm – 8pm Sunday: 12pm – 8pm</p>	<p>DIAMOND BAY WATER PARK: 2034 Trinity Bay Drive Closed Wednesdays for Maintenance</p> <p>May 28 – 30, 2011 (Memorial Holiday Weekend) Sat - Mon : 10am – 8pm</p> <p>June 4th – August 21, 2011 (Full Season)</p> <p>Monday: 10am – 8pm Tuesday: 10am – 8pm Wednesday: Closed for Maintenance Thursday: 10am – 8pm Friday: 10am – 8pm Saturday: 10am – 8pm Sunday: 12pm – 8pm</p>
---	---	---

Homeowners must be current on their assessments and have an active Shadow Creek Ranch Access card to gain entry. For more information or to purchase an access card, please visit the Shadow Creek Ranch Office or call 713.332.4675.



SELL US YOUR CAR.

You've welcomed us into the community. Now let us return the favor by giving you a great deal when you sell us your car. We pay more than anyone else — guaranteed! Call, click or come by today!

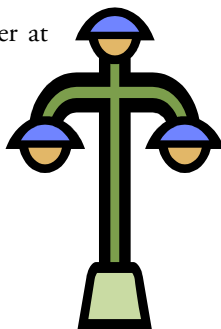
TEXAS DIRECT AUTO

TEXASDIRECTAUTO.COM

Who Can I Contact About Reported Malfunctioning Street Light In Neighborhood?

YOU HAVE SEVERAL OPTIONSTO REPORT A STREET LIGHT PROBLEM:

- 1) Call 281-652-1900
- 2) Email publicworks@ci.pearland.tx.us -
- 3) Report to: <http://www.centerpointenergy.com/outage/> -
<http://cnp.centerpointenergy.com/outage>
- 4) Call Centerpoint's Customer Service Center at
713-207-2222
- 5) Regardless of the method you choose, you
must provide the name of the nearest street,
and the light pole number (found on each
pole about 6' off the ground).



We hope you will find this helpful!

Village Green News

We now have a Facebook Group! Search for "Village Green" and find the listing that has a photo of our Village Green Monument ... then request to be added, as it's a private group. If you do not use Facebook and would still like to receive neighborhood news and event announcements, please email Katie Daggett at thedaggetts2008@gmail.com. Be on the look-out for a Facebook posting about a neighborhood get-together in April. And as always, be sure you meet your neighbors, and introduce yourself to new neighbors. It's the best way to keep our neighborhood safe and fun.

Pinecrest Eggstravaganza

Pinecrest's 2nd Annual Easter Egg Hunt will be held on April 23, 2011, 10:00 am - 12:30 p.m., at the "Greenbelt" (grassy area between Pinecrest and Heatherwood). There will be an Easter egg hunt, games, prizes and treats for the entire family. Donations for the event will be gladly accepted. Please contact Ketreau Butler, female4lsu@yahoo.com and/or 713-436-2760 for questions or more information.

Very Eggcited to See You There.

H.K. BROWN

Lawn Maintenance & Landscaping
Serving the Pearland Area for 23 Years!

Irrigation Services

New Installation | New Controllers
Adding Zones | Electrical Trouble Shooting
Specializing in Repair and Adjustments

Lawn Maintenance

MOWING | BEDS | TREES | FERTILIZING

Call for your Free Estimate!

281.485.5931

Cell: 713.851.8140



Bashans Painting & Home Repair

Commercial/Residential
Free Estimates

281-347-6702






281-731-3383 cell



- Interior & Exterior Painting
- Hardi Plank Installation
- Wood Replacement
- Sheetrock Repair
- Interior Carpentry
- Cabinet Painting
- Wallpaper Removal and Texturizing
- Pressure Washing
- Fence Repair/Replacement
- Garage Floor Epoxy
- Custom Staining
- Roofing
- Gutter Repair/Replacement
- Faux Painting

References Available • Fully Insured
NO PAYMENT UNTIL COMPLETION
bashanspainting@earthlink.net

SHADOW CREEK RANCH

You're Invited!

Fire/EMS Station 5 Grand Opening

Join us for Free Hot Dogs, Community 'Giveaways',
a Burn Demo, a Facility Tour & Much More!

Saturday, April 2
3100 Kirby Dr.
10 a.m. - 1 p.m.
Pearland, 77584



Shadow Creek Ranch *Photos Wanted!*

Would like to encourage you to participate in sharing your favorite community pictures of pets, birthdays, anniversaries, weddings, little league teams, organizations and a brief detail of your special event. Your photos will be published in The Current till the end of the year. You may also submit your favorite holiday recipes. If you wish to participate, please submit photos and recipes to your On-site Mgr.- Bobbie Lopez at blopez@amitx.com



A'Lisa Brister

Formerly with Shadow Creek Ranch Realty
Has Joined



Direct: (281) 684-5264
Office: (713) 970-1018
www.ardent-us.com

- Your Neighborhood Specialist for past 8 years

- Consistently ranked as Top Producer in Sales & Listings

- Specializes in Leasing / Property Management

Free Home Warranty with Listing of Home

Ardent Real Estate is building a team of highly professional and experienced agents. If you are ready to stand out from the crowd- call us for an interview.



UHCL Pearland Campus NOW OPEN!

UHCL Pearland Campus is your local resource for junior, senior, and graduate-level courses in high-demand disciplines. And as we grow, so will our program offerings.

- Accounting
- Management
- Interdisciplinary Studies, EC-6
- Educational Management
- Psychology
- Behavioral Science
- Criminology
- Counseling

University
of Houston
Clear Lake
Pearland Campus

www.uhcl.edu/pearland

1200 Pearland Parkway, Pearland, Texas 77581
281-212-1690

LOWER YOUR ENERGY BILLS

TIPS TO LOWER ENERGY BILLS



- * Energy Audits
- * Insulation
- * Radiant Barrier
- * Reflective Insulation
- * Solar Screens
- * Ventilation
- * Weatherization



PMG is a full-service energy solutions company that specializes in making homes and businesses energy efficient. Our professional staff can assist you in determining the best solution for your budget. PMG is owned and operated by a Shadow Creek Ranch resident. For information contact us at info@PMGenergy.com.

1. Energy Rate - If you are paying more than 9 cents per kWh, you could be paying too much. To reduce your energy bill contact Amigo Energy at 713-881-8586 or www.amigoenergy.com/PMG. Mention PMG to receive the discounted energy rate. Terms and conditions apply. PUCT 1008.



2. Radiant Barrier / Reflective Insulation – Almost 50% of the heat going into your home comes from your attic. Thus, reducing the temperature of your attic will automatically keep your home cooler during those hot days. Reflective insulation and radiant barrier do just that by reflecting the radiant heat from the sun.

3. Solar Screens - Approximately 40% of the heat going into your home enters via windows and doors. Solar screens will ensure blockage of 80% of direct sunlight into your home.

4. Weatherization – Find out where your home has holes in the floor system, wall system, and ceiling. Sealing these holes will allow your A/C system to properly cool your home as needed.

5. Insulation in Walls – If you live in a home that is more than 25 years old, there is a chance you do not have insulation in the wall system. This type of insulation is easy to install and can be done without tearing down interior walls.

6. Insulate attic - Most homes have far less insulation in the attic than what is required to maintain proper indoor temperature. The blown in insulation is the ideal insulation to ensure coverage of all cracks and air pockets. This prevents attic air from entering home.

713-880-2626
www.PMGenergy.com

**CALL US TODAY
AND SAVE!!!**

SHADOW CREEK RANCH

Bicycle Safety

According to the Greater Houston American Red Cross each year, approximately 500,000 people are non-fatally injured while riding a bicycle. Ninety percent of bicyclists killed in 2000 reportedly were not wearing helmets. Always wear an approved helmet when cycling. The head or neck is the most seriously injured part of the body in most fatally injured cyclists. Children should wear a helmet even if they are still riding along the sidewalk on training wheels. Some states have helmet laws that apply to young children.

- Many bicycle injuries can be prevented by wearing a helmet. Always wear a correctly-fitting helmet when riding. Even children using tricycles or bikes with training wheels should wear helmets.



Adults should also wear helmets at all times, including when riding with children. The Bicycle Helmet Safety Institute has more information on how to fit a helmet.

- Be sure that helmets meet standards set by the Consumer Product Safety Commission (CPSC), the Snell Memorial Foundation or the American Society for Testing and Materials (ASTM). Look for a label or a sticker on the box or inside the helmet indicating that it meets the above standards.
- Wear closed shoes when riding a bike.
- Make sure your bike and your child's bike have good brakes, a front light and effective reflecting material.
- Ride only in safe areas and at safe times.
- Make sure bikes are the correct size for the rider.
- Learn about bicycle etiquette, laws, and safe riding practices and teach your children about them.

For more information, please visit www.houstonredcross.org

BLACK IRON FENCES ARE THE RESPONSIBILITY OF THE HOMEOWNER TO MAINTAIN. PLEASE CONTACT OUR OFFICE FOR DETAILS.

CURB PAINTING REQUIRES AN ARCHITECTURAL APPLICATION AND SAMPLE.



COLIN'S HOPE

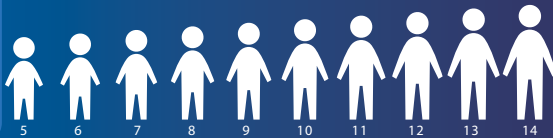
Increasing water safety awareness and standards

FACTS YOU NEED TO KNOW ABOUT DROWNING

Drowning is the leading cause of unintentional injury-related death in children ages 1-4



DROWNING WILL AFFECT YOU OR SOMEONE YOU KNOW



Drowning is the 2nd leading cause of unintentional injury-related death ages 1-14.

For more information, check out our website at

www.colinshope.org

DROWNING CAN STILL OCCUR EVEN IF YOU KNOW HOW TO SWIM

NO ONE is "drown proof" – no matter their level of swimming ability.

Falls, entrapments, and injuries lead to drowning regardless of swimming level.

A majority of people overestimate their own and their child's ability to swim, especially in a panic event.

DROWNING IS QUICK AND SILENT



Drowning occurs in as little as 2 minutes.



Irreversible brain damage occurs in as little as 4 minutes.



Most children are out of sight or missing for less than 5 minutes and usually in the presence of 1 or both parents.

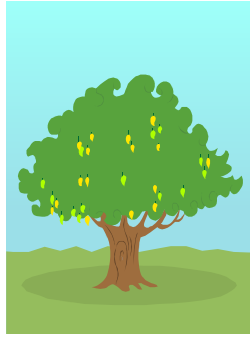


Most children die who are submerged for as little as 6-10 minutes.

Children who drown do not **scream, splash, or struggle**. They silently slip beneath the water, even with adults & lifeguards present.

Diagnosing Tree Problems

Trees are a valuable part of our environment. They provide shelter and shade, help prevent erosion, and add beauty and monetary value to our property. Unfortunately, many factors can cause trees to become unhealthy and lose their aesthetic value or die: environmental stresses, site problems, animal injury, infectious diseases, and insect infestations. In many cases, more than one factor may be involved. A correct diagnosis of the problem is the important first step in trying to save an unhealthy tree.



Examine a tree

- 1) Look at the entire tree (foliage, trunk, branches), not just areas that seem to show a problem.
- 2) Look for yellow leaves, for instance, might be caused by root injury or high soil pH. Also, keep in mind that different agents may produce similar symptoms.
- 3) Do the leaves have holes or ragged edges?
- 4) Are the leaf margins brown?
- 5) Are leaves abnormally discolored (yellow, light green, brown, black)?
- 6) Are spots or bumps evident on the foliage?

- 7) Have some or all of the leaves fallen prematurely?
- 8) Are the leaves deformed (cupped, twisted, etc.)
- 9) Are insects or mites present on the leaves?

Examine the trunk and branches

- 1) Has the bark been injured by mowing equipment, vehicles or animals?
- 2) Is there evidence of insect activity (holes, chewing marks, tunnels, etc.)?
- 3) Are there any splits or cracks in the bark, and if so, on what side of the tree? Sunscald injury, frost, and lightning are all factors that can cause the bark to split or break apart.
- 4) Has the tree been damaged by ice, hail, or wind?
- 5) Is the tissue beneath the bark discolored (tan or brown)? This may indicate weather injury.

Consider the roots

- 1) Was the tree planted too deeply?
- 2) Has physical injury to the roots taken place, such as construction injury?
- 3) Has there been any trenching to bury a phone or utility line nearby?

(Continued on Page 11)

HOME REPAIRS & IMPROVEMENTS *Done Right!*

Specializing In Residential Remodeling
Locally Owned & Operated

Call Doug for a Free In-home Estimate:

Office 713-834-2922/Cell 713-826-0299

america9construction.com

dougk@america9construction.com



- Kitchen & Bath Remodels
- Custom Cabinets
- Solid Granite and Granite Tile Countertops
- Painting & Texturing
- Fences/Decks
- Landscape Timber
- Gazebos/Patio Enclosures/Sheds
- Garages
- Drywall
- Architectural Trim
- Electrical/Plumbing
- Pressure Washing



*References Available
Upon Request
Insured & Bonded
Reasonable Rates*

Find us on facebook!



*Dedicated to the Excellence of
Service & Professionalism*

Patty McCracken
ABR Platinum Club



RE/MAX Pearland
Hall of Fame

FREE Home
Market Analysis

10015 Broadway
Suite B
Pearland, Texas 77584
281-686-9301
pattymccracken.com



SHADOW CREEK RANCH

The Current is the official publication of the Shadow Creek Ranch Maintenance Association. At no time will any source be allowed to use The Current's contents, or loan said contents, to others in anyway, shape or form, nor in any media, website, print, film, e-mail, electrostatic copy, fax, or etc. for the purpose of solicitation, commercial use, or any use for profit, political campaigns, or other self amplification, under penalty of law without written or expressed permission from the Shadow Creek Ranch Maintenance Association and Peel, Inc. The information in the newsletter is exclusively for the private use of Shadow Creek Ranch and Peel, Inc.

DISCLAIMER: Articles and ads in this newsletter express the opinions of their authors and do not necessarily reflect the opinions of Peel, Inc. or its employees. Peel, Inc. is not responsible for the accuracy of any facts stated in articles submitted by others. The publisher also assumes no responsibility for the advertising content with this publication. All warranties and representations made in the advertising content are solely that of the advertiser and any such claims regarding its content should be taken up with the advertiser.

* The publisher assumes no liability with regard to its advertisers for misprints or failure to place advertising in this publication except for the actual cost of such advertising.

* Although every effort is taken to avoid mistakes and/or misprints, the publisher assumes no responsibility for any errors of information or typographical mistakes, except as limited to the cost of advertising as stated above or in the case of misinformation, a printed retraction/correction.

* Under no circumstances shall the publisher be held liable for incidental or consequential damages, inconvenience, loss of business or services, or any other liabilities from failure to publish, or from failure to publish in a timely manner, except as limited to liabilities stated above.

Pearland Parks & Recreation and the Pearland Town Center are proud to host the 5th annual *"Let Freedom Sing" Talent Search*

Two of Pearland's most talented vocal performers will be selected to sing the National Anthem and God Bless America at the citywide July 4th Celebration of Freedom!

Auditions will be Saturday, April 30, 2011 @ The Pearland Town Center, 11200 Broadway Street, under the pavilion at 2:00pm. Adult and youth age categories available; contestants must be 8 years of age or older.

Applications and rules are available at pearlandparks.com or in person at the Parks & Recreation Office (4141 Bailey Road) or at the Customer Service Center at the Pearland Town Center. Please call 281-412-8900 for additional information.

Please Don't Forget Us!

As a Shadow Creek Ranch small business owner and resident, I am thrilled about our growth and street widening projects. We are moving in a positive direction and with all of our support, Shadow Creek Ranch (and Pearland as a whole), will continue to prosper.

That is why I am making a personal plea to all of our SCR Residents to brave the construction and loyally patronize the Shadow Creek Ranch retailers on Shadow Creek Parkway. Thank you for your continued support!

Leanne Dobard Alvarez
The UPS Store at Shadow Creek

Do You Have Reason To Celebrate?

We want to hear from you! Email shadowcreekranch@peelinc.com to let the community know!

**NOT AVAILABLE
ONLINE**

YOUR NEW OUTDOOR
Living Room



PATIO COVERS
SCREENED PORCHES
SUNROOMS
ROOM ADDITIONS
OUTDOOR KITCHENS
GAZEBOS
AND MORE

TEXAS
Custom
PATIOS

281-342-1994

www.TexasCustomPatios.com
Designed and Built To Look Original To Your Home

BBB
facebook

SHADOW CREEK RANCH

Diagnosing Tree Problems - (Continued from Page 9)

- 4) Has soil grade or nearby terrain been changed?
- 5) Has there been an addition of a patio, road sidewalk, or new building nearby?
- 6) Have any flowers, shrubs, or trees been planted nearby or under the tree?
- 7) Has the soil been excessively wet or dry?
- 8) Have any chemicals been applied to the soil?
- 9) Is there visual evidence of girdling roots?
- 10) Is there any turf growing over the tree roots?

The symptoms mentioned above can be caused by a number of factors, including weather damage, infectious diseases, insect feeding, chemical injury, site related stresses, and transplant shock. It is important to look for these symptoms as you collect background information.

For replacement of tree(s) or further Shadow Creek Ranch HOA Landscaping Guidelines, please visit our website at www.shadowcreekranchhoa.com to download a copy of the ARC-Architectural Review Committee form or contact: Property Maintenance: Mark Simien – msimien@amitx.com

Shadow Creek Ranch Lawn Care Tips

Tree staking is never done with the intention of harming a tree. Staking is usually done with love and with a desire to promote root and trunk growth and protect a young tree from harm. What some tree planters do not understand is, rather than helping a tree develop root and trunk growth, improper tree staking replaces a supportive trunk and root system with an artificial support that causes the tree to put its resources into growing taller but not growing wider.

If and when the stakes are removed, the lack of trunk and root development makes these trees prime candidates for breakage or blow-down. In the first good windstorm, down these trees come. They have lost the supportive protection of natural development.

Latest News most containerized and correctly dug balled and burlaped tree seedlings and saplings do not need staking. If you are planting bare root trees you might consider staking for a short period. If trees must be staked, place stakes as low as possible but no higher than 2/3 the height of the tree. Materials used to tie the tree to the stake should be flexible and allow for movement all the way down to the ground so that trunk taper develops correctly.

Remove all staking material after roots have established. This can be as early as a few months, but should be no longer than one growing season. Materials used for permanent tree protection should never be attached to the tree.
Shadow Creek Ranch Maintenance- Mark Simien- msimien@amitx.com

When It Comes To **SPORTS** **INJURIES ...**



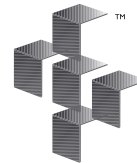
We Have Your Bases Covered.

Did you know that over 800,000 teens and children are admitted to ERs yearly because of recreational and sports-related injuries? Whether it's a cut that requires stitches, a head trauma, a sprain, strain or broken bone, come see the specialists at Texas Emergency Care Center.

We offer the latest in medical equipment and state-of-the-art testing capabilities, including:

- A full-service laboratory.
- Radiology equipment.
- Ultrasound imaging.
- CT scanning.
- Cardiac monitoring.

**24-Hour Emergency Care
That's Close To Home.**



T E X A S
EMERGENCY CARE
C E N T E R™

READY OR NOT ... WE ARE.™



Accredited by the Joint Commission of Accreditation of Healthcare Organizations for our commitment to excellence.

A Licensed, Free-Standing
Emergency Medical Care Facility.

txercare.com

All private insurance accepted.

PEARLAND

3115 Dixie Farm Road, Suite 107
FM 518 at Dixie Farm Road
281-648-9113

CYPRESS

17255 Spring Cypress Road, Suite A
Spring Cypress at Skinner Road
281-304-9113

SHADOW CREEK RANCH

Help Make Westside Library A Reality!

WE NEED YOUR SUPPORT. PLEASE COME AND HELP US MAKE A LIBRARY ON THE WESTSIDE A REALITY. WE MEET ON THE FOURTH THURSDAY OF EVERY MONTH AT 7PM.

Location: Nolan Ryan Jr. High Library
11500 Shadow Creek Parkway
Pearland, TX 77584

(*location of future meetings may change*)



Please remember that we are now accepting memberships and donations. If you wish to become a member, the amount is \$20, but we accept any amount you wish to give. The group needs to raise funds for becoming a non-profit and for the collection for the real library when it becomes a reality. We are working on a website, but have not yet gotten that up. Once the website is in place, we can take donations through paypal. For now, we ask that you send checks to our treasurer. That information is on the form that you can send in with it. An email receipt will be issued. We look forward to seeing you there!

The Friends of the Pearland Westside Library

The Friends of the Pearland Westside Library will be participating in

the Wilder Elementary PTO Spring Carnival on Saturday, April 9th from noon to 4PM. The family event will have crafts, games, inflatables, food and drink, a cupcake walk, and a silent auction. The event is a major fund raising activity for the PTO and depends on Parent and local business support.

The Friends of the Pearland Westside Library is a non-profit group dedicated to acquiring public library services for the west side of Pearland and northern Brazoria County. Their presence at the carnival is to bring notice to the group and generate support from area residents. The group will sponsor various crafts and games and offer story time at regular intervals with several local dignitaries reading.

A large advertisement for StarTex Power. The background is a red carpet with photographers and cameras. A large sign in the center reads "Experience the STAR treatment FOR YOURSELF with low rates, award-winning customer service, and no surprises." Below the sign is the StarTex Power logo, which consists of a red starburst shape and the text "StarTex POWER". Below the logo is a quote: "Listen to Alan 'Petrodamus' Lammey, host of 'Energy Week', every Sunday on 1070 KNTH in Houston." At the bottom of the advertisement, there is a red banner with white text that says "SIGN UP online TODAY at www.StarTexPower.com or call 866-917-8271. Use 'Neighborhood Newsletter' as your referral!". There is also a BBB logo and a PUCT #10089 in the bottom right corner.

SHADOW CREEK RANCH

Membership Enrollment and Donation Form

Please Print or Type

Name _____

Address _____

City _____ State _____

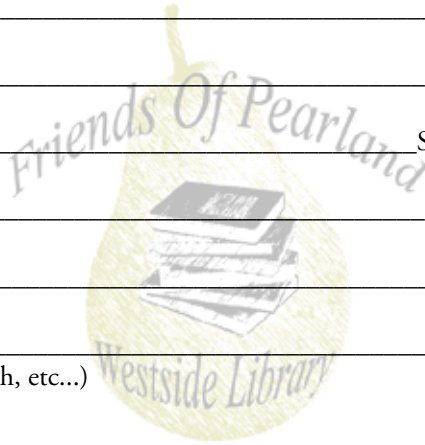
Phone _____

Email(s) _____

Subdivision _____

(Silverlake, Southwyck, Shadow Creek Ranch, etc...)

Amount of check: _____



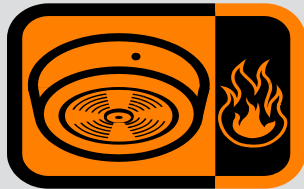
Please send checks payable to Friends of the Pearland Westside Library to: Marie Ferguson, Treasurer, 11315 Enclave Lake Ln, Pearland, TX 77584 . Donations of any amount are accepted, but membership for each person is \$20.00. If you wish more than one person in your household to be a member, please include all names and email and \$20.00 for each person who wishes to become a member. You do not have to live on the west side of town to become a member.

**HOW ARE YOUR
SOCIAL NETWORKING SKILLS?**

Follow Peel, Inc. Community
Newsletters on Facebook
www.peelinc.com/Facebook

U.S. Fire Administration *Focus on Fire Safety: Smoke Alarms*

Every year, approximately 2,600 Americans die in home fires. Over half of these deaths (52%) occur between the hours of 10:00pm and 7:00am, when residents are typically sleeping. Smoke and



toxic gases from a home fire are as deadly as heat and flames. Just two or three breaths of toxic smoke can render you unconscious. The majority of fire victims die or are injured from exposure to smoke and toxic gases, such as carbon monoxide, not actual burns. In addition, smoke obscures vision, decreasing your ability to escape.

Smoke alarms save lives, prevent injuries, and minimize property damage by detecting fires early and alerting residents, allowing crucial time to escape. The risk of dying from a fire in a home without working smoke alarms is twice as high as in a home that has working smoke alarms.

What types of smoke alarms are available?

There are many different brands of smoke alarms available on the market but they fall under two basic types: ionization and photoelectric.

Ionization alarms sound more quickly when a flaming, fast moving fire occurs.

Photoelectric alarms are quicker at sensing smoldering, smoky fires.

There are also combination (dual sensor) smoke alarms that combine ionization and photoelectric into one unit. Because both ionization and photoelectric smoke alarms are better at detecting distinctly different yet potentially fatal fires, and because home residents cannot predict what type of fire might start in a home, the U.S. Fire Administration recommends the installation of both ionization and photoelectric or dual sensor smoke alarms.

In addition to the basic types of smoke alarms, there are alarms made to meet the needs of people with hearing disabilities. These alarms may use strobe lights that flash and/or vibrate to assist in alerting those who are unable to hear standard smoke alarms when they sound.

How long will my smoke alarm last?

Most alarms installed today have a life span of about 8-10 years. After this time, the entire unit should be replaced. It is a good idea to write the date of purchase with a marker on the inside of your alarm so you will know when to replace it. Always follow the manufacturer's instructions for replacement.



TRIATHLON

Shadow Creek Ranch Sprint Triathlon Benefiting the ADA

*Sunday, July 17, 2011 @ 6:45 AM
Corner of Shadow Creek Parkway and Trinity Bay Drive
Pearland, TX 77053*

Date & Time

Sunday, July 17, 2011 @ 6:45 AM

Location

Shadow Creek Ranch Subdivision

Event Closing Date

Saturday, July 16, 2011 @ 11:59 PM

Brief Description

Sprint distance triathlon that is benefiting the American Diabetes Association

More Information

<http://www.shadowcreekranchtriathlon.com/>

Donations

Shadow Creek Ranch Tri benefiting the ADA

Sanctioning

USAT Sanctioned Event

USA Triathlon is the national governing body for the sports of triathlon, duathlon, winter triathlon and aquathlon in the United States. Participation in a USAT sanctioned event means the event director has the proper permits in place, liability and athlete excess medical insurance coverage and the event plan has met the standard of organization required. USA Triathlon provides rules, guidance and governance to set the standard for safe and fair multi-sport races. For more information on USA Triathlon and fueling the multi-sport lifestyle, visit our website at <http://www.usatriathlon.org>.

SHADOW CREEK RANCH

Shadow Creek Ranch Maintenance Association Amenities Access Card Request Form Pools, Basketball And Tennis Courts

*Please Complete And Return This Form With Fee To:
Shadow Creek Ranch Maintenance Association
c/o Association Management, Inc.
12234 Shadow Creek Parkway, Suite #3114
Pearland., Texas 77584*

Please make your check payable to: SCRMA

- (1) A \$10 Non-refundable Fee Is Required For Each Access Card
- (2) Additional Or Replacement Cards Are \$10 Each.
- (3) Lost Cards Are Immediately De-activated.

Please note: Before we can issue amenities access cards, the Association must have proof of ownership of property within the community. The Association may not receive closing information from the title companies for approximately 60 days (or longer) following closing. In order to expedite receipt of your access cards, we recommend you also submit a copy of your closing statement along with this application. Each card allows three (3) people in the gate.

Name: _____

Address: _____

E-Mail: _____

Phone: _____

Signature: _____

Date: _____

(Attach copy of Lease Agreement if you are a Resident)

A/R: _____ Verified by: _____

Access Card # _____ Access Card # _____

Access Card # _____ Access Card # _____

Access Card # _____ Access Card # _____

SR #
Village#
Check #
Amount \$

PearlandSam.com

Get on the *SOLD* Train!



Get Yours SOLD!

Pearland's #1 Realtor!

Sam
FERRERI



832-200-5656

RE/MAX **Top** Realty

Each Office Independently Owned and Operated.

Direct Impressions Marketing 713.545.1269