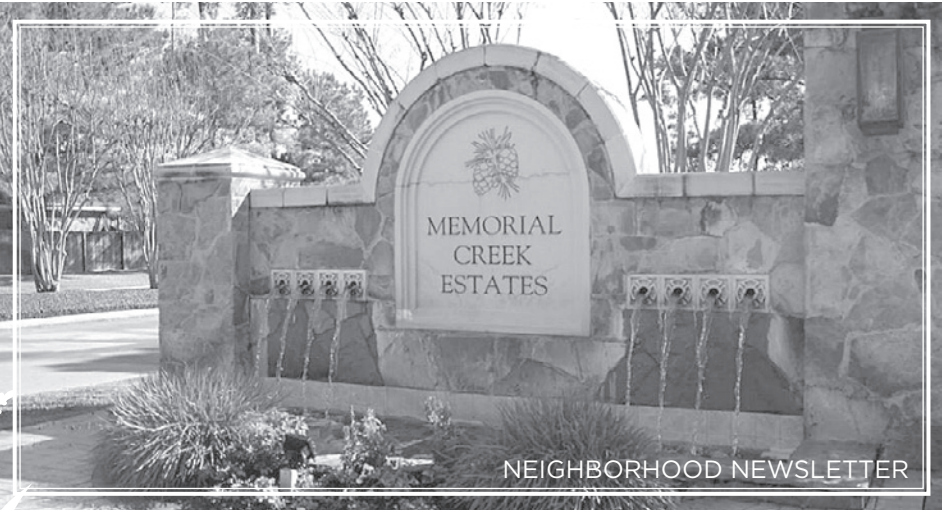


VOLUME 3

ISSUE 6

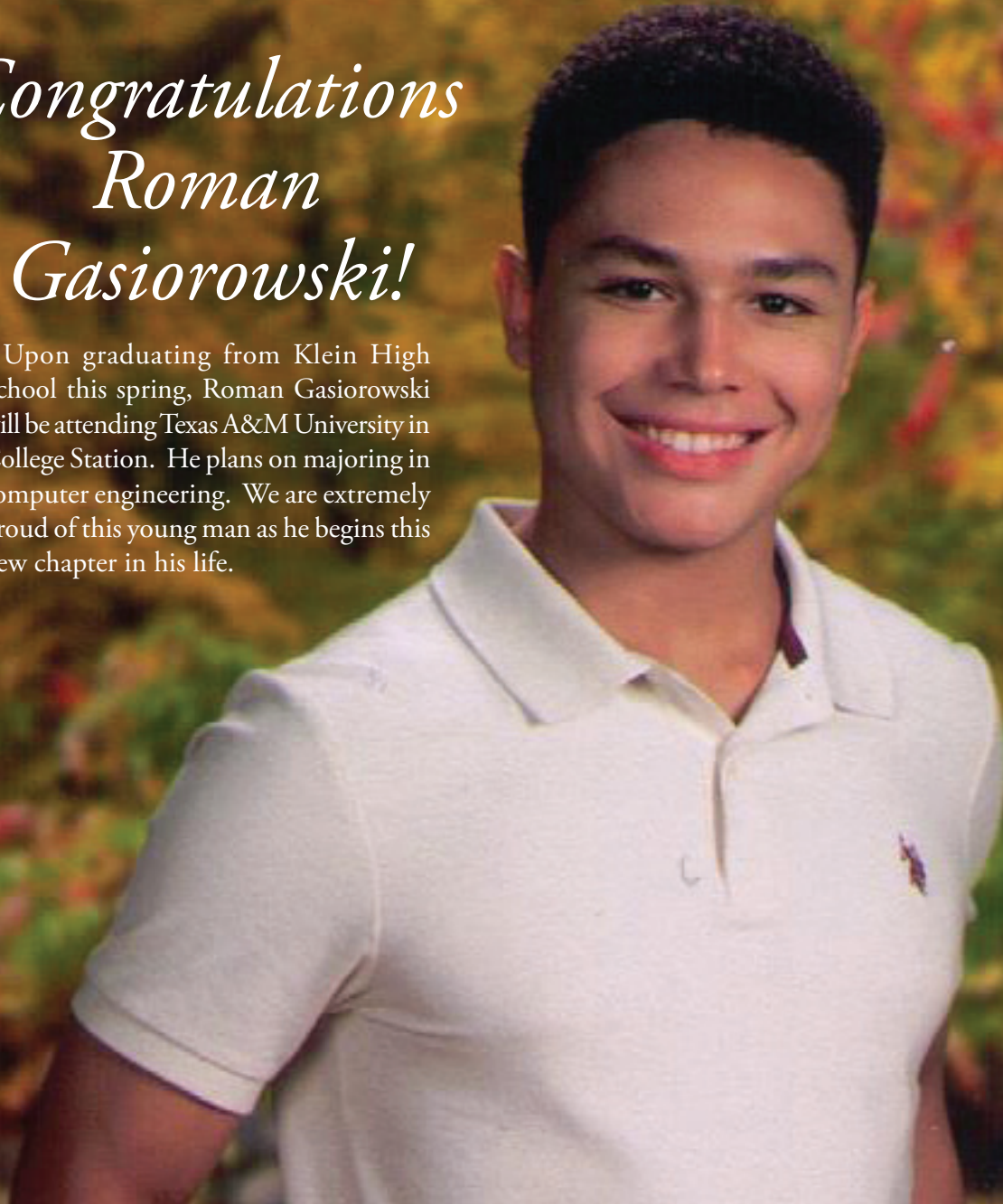
THE MEMORIAL CREEK ESTATES

Bulletin



Congratulations Roman Gasiorowski!

Upon graduating from Klein High School this spring, Roman Gasiorowski will be attending Texas A&M University in College Station. He plans on majoring in computer engineering. We are extremely proud of this young man as he begins this new chapter in his life.



Memorial Creek Estates Bulletin

IMPORTANT CONTACTS

MANAGEMENT COMPANY

First Service Residential..... contactus.tx@fsresidential.com
Jasmine Mitchell | Community Manager..... 713-984-7206

NEWSLETTER

Lauren McCarty | Editor..... lauren.mccarty7@gmail.com
Peel Inc. | Publisher..... www.PEELinc.com
Advertising..... advertising@PEELinc.com

HOA

Jeff Crock..... President
Steve Peltier..... Board Member
Kurt Gooslsbee..... Board Member
Anthony Carroll..... Committee Member
Deborah Maly..... Committee Member
Lauren McCarty..... Committee Member
Lester Brown..... Committee Member
Monthly HOA meetings on the 3rd Thursday at 6:30 pm
6900 Crescent Clover, Spring, TX 77379

COMMUNITY SERVICES

Gas | Centerpoint Energy..... 713-659-2111
Call Centerpoint for street light repair or outages
Pool | Sweetwater Pools..... 281-988-8480
Closed on Mondays
Constable Precinct 4 | Non-emergency..... 281-376-3472
In the event of an emergency, please call "911"
Trash & Recycling | Texas Pride Disposal..... Tuesday & Friday
Fire Department..... 9755 Landry Blvd.
Animal Control..... 281-999-3191



**Memorial Creek
Estates
Facebook**

Did you know we have a Facebook Page! We are the "Unofficial Memorial Creek Estates" Stay in the know between newsletters.

Attention Parents of Graduating Seniors!

We would like to recognize our graduating seniors by including a small picture and a few lines about where your child will be attending college. Please send your information to articles@peelinc.com (include the newsletter you would like to recognize them in, photo, name, etc).



BASHANS PAINTING & HOME REPAIR

- Interior & Exterior Painting
- HardiPlank Replacement
- Sheetrock Repair
- Cabinet Painting
- Pressure Washing
- Fence Replacement
- Custom Staining
- Wood Replacement
- Interior Carpentry
- Sheet Rock Insulation
- Interior & Exterior Door Replacements
- Stucco Repair
- Wallpaper & Texture Removal
- Crown Molding

NO MONEY UP FRONT
20 Years Experience • References Available
Commercial/Residential

~ FREE ESTIMATES ~

BashansPainting@yahoo.com

FULLY INSURED

281-347-6702
281-347-1867

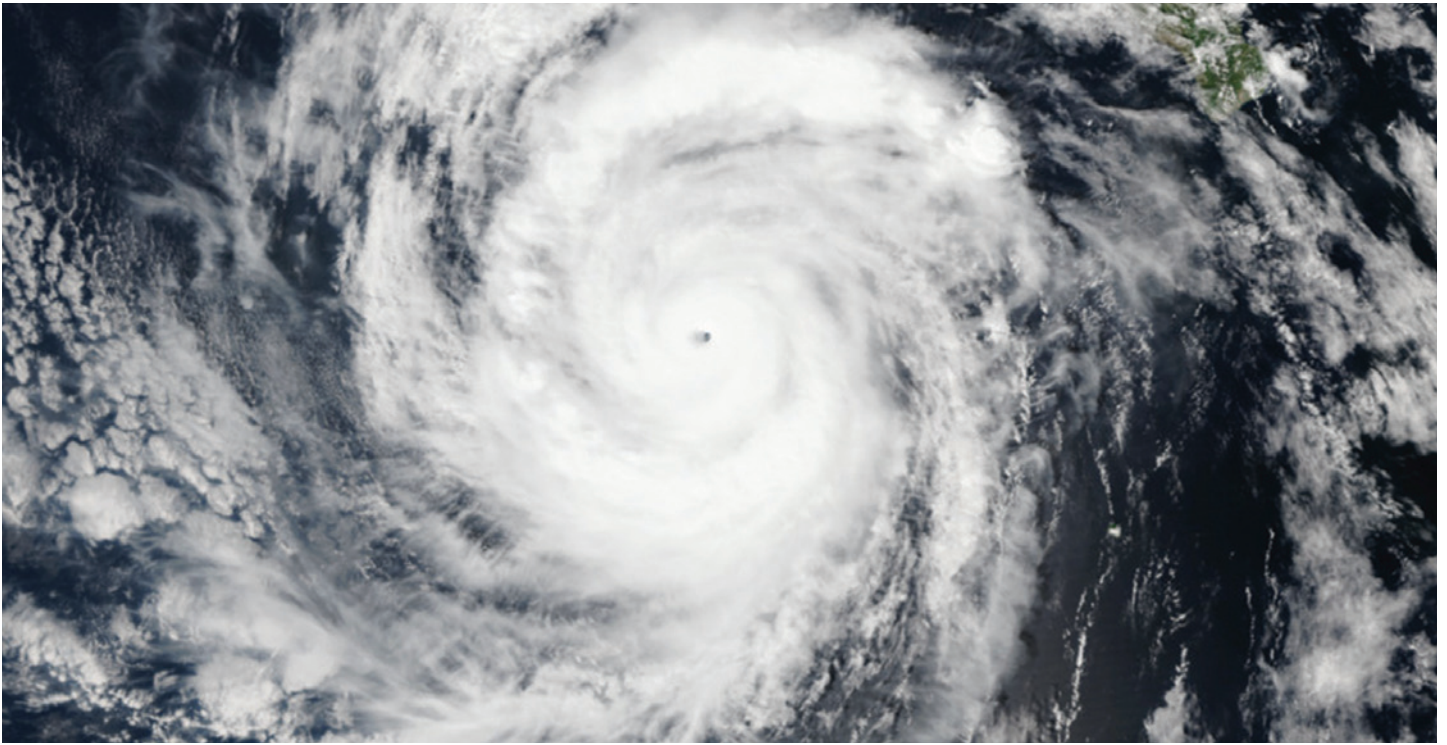


HARDIPLANK®



Memorial Creek Estates Bulletin

Hurricane Preparedness



Each year NOAA and the American Red Cross publishes a preparedness guide of tropical cyclones to help us prepare for such an emergency. You can download a copy of that guide at <http://www.nws.noaa.gov/os/hurricane/resources/TropicalCyclones11.pdf>. This guide gives great information on the metrological terms associated with tropical storms and what to expect from those storms. Most importantly, it lists critical information about how to prepare for an incoming storm.

Guidelines each year prior to hurricane season:

- Determine safe evacuation routes inland
- Learn locations of official shelters
- Check emergency equipment such as flashlights, generators and battery powered equipment such as cell phones and your NOAA Weather Radio All Hazards receiver.
- Buy food that will not spoil and store drinking water.
- Buy plywood or other material to protect your home if you don't have it.
- Trim trees and shrubbery so branches don't fly into your home.
- Clear clogged rain gutters and downspouts.
- Decide where to move your boat if applicable.
- Review your insurance policy.
- Find pet friendly hotels on your evacuation route.

During the storm and when Pearland is in the warning area, you should:

- Closely monitor radio, TV or NOAA Weather Radio All Hazards for official bulletins.
- Close storm shutters.

- Follow instructions issued by local officials. Leave immediately if ordered.

- Stay with friends or relatives at a low-rise inland hotel or at designated public shelter outside of the flood zone.

- DO NOT stay in a mobile home or manufactured home.

- Notify neighbors and a family member outside of the warned area of your evacuation plans.

- Take pets with you, but remember that most public shelters do not allow pets other than service pets for people with disabilities.

- Identify pet friendly hotels along your evacuation route.

If you are staying home to "hunker" out the storm:

- Turn refrigerator to maximum cold and keep it closed.

- Turn off utilities if told to do so by authorities.

- Turn off propane gas tanks.

- Unplug small appliances.

- Fill bathtub and large containers with water in case clean tap water is unavailable. Use water in bathtubs for cleaning and flushing only. Do NOT drink it.

- Stay away from windows and doors, even if they are covered. Take refuge in a small interior room, closet or hallway.

- Close all interior doors. Secure and brace exterior doors.

- If you are in a two-story house, go to an interior first floor room.

- If you are in a multi-story building and away from water, go to the first or second floor and stay in the hallways or other interior rooms away from windows.

- Lie on the floor under a table or other sturdy object.

Memorial Creek Estates Bulletin

Bird Bath Bliss

By Cheryl Conley, TWRC Wildlife Center



The heat is on! Just like us, birds enjoy and need a clean drink of water and a cooling bath. You can do birds a great service by providing a birdbath where they can drink, bathe and preen. Here is some helpful information regarding birdbaths.

- Birds aren't going to swim in it so it doesn't have to be deep. They only partially submerge their bodies so the optimal depth is from 1 to 3 inches.

- The bottom of your birdbath should not be slippery. If it is, you can add small rocks to the bottom.

- Birds are attracted by moving water so if you want to attract a larger number of birds, you should consider purchasing one with that feature. If you already have a birdbath, you can purchase a piece to attach to it. There are also misters available for purchase.

- Your birdbath need not be fancy. Trust me, birds don't care. The color, shape and style is of little importance

- A dirty birdbath is hazardous to birds. Stagnant water can harbor unhealthy concentrations of bacteria that cause diseases. Stagnant water can also attract mosquitoes that may carry diseases dangerous to both humans and birds. There are numerous soaps and cleansers on the market but the best solution to keeping your birdbath clean is to mix nine parts water to one part vinegar. Chemicals found in commercial cleaners can strip birds of essential oils in their feathers. Scrub your birdbath with the solution and a brush and rinse, rinse, rinse. Be sure to refill the birdbath every couple of days. There are self-cleaning, self-filling units on the market, too, although you can expect to pay considerably more for those.

- In our part of the country, it doesn't get extremely cold in the winter but you can add a heater to the birdbath if you wish. Just search for birdbath heaters on the web.

TWRC Wildlife Center is admitting hundreds of baby birds right now and some are coming to us needlessly. When baby birds are old enough, they will leave the nest before they are able to fly. They will spend several days on the ground until their flight feathers develop. These birds are called fledglings. Before picking up the fledgling, wait and observe. In most cases you'll see Mom watching over them and feeding them. If you don't see Mom after a period of time, it's okay to rescue the bird and bring it to us for care. Do not attempt to feed it or give it water! Keep in safe and warm in a box and get it to us as quickly as possible. If you have any questions, you can call us at 713.468.8972. Hours are Monday-Thursday, 10am to 7pm. Friday, Saturday and Sunday, 10am to 2pm.

Register for Local Kids' Running Team



The Northwest Flyers Track Club Youth Cross Country Team kicks off the fall season with a mandatory orientation meeting for parents and athletes on Monday, September 9th, 2019, at 6:30 p.m. (location TBA). Registration starts online on September 1st at www.northwestflyers.org. Practices are held at the Kickerillo-Mischer Reserve in Houston and at Spring Creek Park in Tomball.

The Northwest Flyers Track Club is a member program of USA Track and Field (USATF), the national governing body for track and cross country. The club is celebrating its 32nd year in the northwest Houston area. Ages 6 - 18 may participate in the team, and both beginners and experienced runners are welcome. Middle school and high school cross country athletes can also register, but should compete after their school cross country season is over.

For more information contact Coach Chris Stewart at 832-874-7181 or milpa_alta@hotmail.com. Visit www.northwestflyers.org to get updates and learn more about the team.

GO **GREEN**
GO **PAPERLESS**



Sign up to
get this
newsletter
in your
inbox! Visit
peelinc.com
for details.

EMERGENCIES CAN'T WAIT. NEITHER SHOULD YOU.

Full-Service ER in Your Neighborhood

**OPEN
24/7**

When every minute counts, where you receive medical care matters, especially in an emergency. Houston Methodist Emergency Care Center in Cypress offers the high-quality emergency care you need — close to home.



Fast, efficient
check-ins



Board-certified
physicians



Specially trained
staff



On-site
imaging



Lab services
on-site



Direct admission
to hospital

houstonmethodist.org/ecc-cypress | 281.737.2424

HOUSTON
Methodist
EMERGENCY CARE CENTER

Houston Methodist Emergency Care Center in Cypress
27560 U.S. 290 Frontage Rd. (at Fairfield Creek Drive)
Cypress, TX 77433



Memorial Creek Estates Bulletin

At no time will any source be allowed to use the Memorial Creek Estates Newsletter's contents, or loan said contents, to others in any way, shape or form, nor in any media, website, print, film, e-mail, electrostatic copy, fax, or etc. for the purpose of solicitation, commercial use, or any use for profit, political campaigns, or other self amplification, under penalty of law without written or expressed permission from Peel, Inc. The information in the Memorial Creek Estates Newsletter is exclusively for the private use of the Memorial Creek Estates HOA and Peel, Inc.

DISCLAIMER: Articles and ads in this newsletter express the opinions of their authors and do not necessarily reflect the opinions of Peel, Inc. or its employees. Peel, Inc. is not responsible for the accuracy of any facts stated in articles submitted by others. The publisher also assumes no responsibility for the advertising content with this publication. All warranties and representations made in the advertising content are solely that of the advertiser and any such claims regarding its content should be taken up with the advertiser.

* The publisher assumes no liability with regard to its advertisers for misprints or failure to place advertising in this publication except for the actual cost of such advertising.

* Although every effort is taken to avoid mistakes and/or misprints, the publisher assumes no responsibility for any errors of information or typographical mistakes, except as limited to the cost of advertising as stated above or in the case of misinformation, a printed retraction/correction.

* Under no circumstances shall the publisher be held liable for incidental or consequential damages, inconvenience, loss of business or services, or any other liabilities from failure to publish, or from failure to publish in a timely manner, except as limited to liabilities stated above.

BUSINESS CLASSIFIED

HOKULIA SHAVE ICE: 3540 Rayford Rd, Spring, TX 77386 - Open Weekends In May (weather permitting)
Daily@school Summer Break - (located@HEB Spring Market Pharmacy entrance) Authentically Hawaiian - Bring this coupon for FREE Sno Cap (Cream topping)! EXP 06/30/19
Now Hiring! Call or Text 832-548-0988

Business classifieds (offering a service or product line for profit) are \$50, limit 40 words, please contact Peel, Inc. Sales Office @ 512-263-9181 or advertising@PEELinc.com.

United States
**Census
2020**

APPLY ONLINE NOW! 2020census.gov/jobs

2020 Census jobs provide:

- ✓ Great pay
- ✓ Flexible hours
- ✓ Weekly pay
- ✓ Paid training

Thousands of jobs are available nationwide, and many are near you.
Help support your community by being a Census Taker.

For more information or help applying, please call

1-855-JOB-2020

The U.S. Census Bureau is an Equal Opportunity Employer.

WIRED | **GENERATORS**
ELECTRICAL SERVICES | by **WIRED**

Residential & Commercial
Family Owned & Operated

Home Standby Generators

- ✓ Installation
- ✓ Maintenance
- ✓ Services & Repair

713-467-1125
generatorsbywired.com

\$20 OFF Your Next Service Call!
Not to be combined with any other discount or offer. Expires 7/1/2019

5 Year Warranty*
100% Customer Satisfaction Guaranteed!



VISA, MasterCard, American Express, Discover, BBB
Master #100394 TECL #22809

DID YOU SAY FREE?

**YES! YOUR NEWSLETTER IS
PROVIDED 100% FREE OF CHARGE**

and is made possible by the advertisers within. Please frequent their businesses and let them know where you saw their advertisement. While there, be sure to say "Thanks!"

www.PEELinc.com

PEEL, INC.
community newsletters



Messiah: A Lutheran Faith Community Camp Hope



LAB: REWRITE THE RULES

Week 1: July 8-12

Week 2: July 15-19

Week 2: July 22-26

9:30 am –3:30 pm

Camp Hope is our three-week day camp for children ages 5 years old through 6th grade. It is an adult mentored student led ministry. Each day, children will hear a new Bible story; learn what it means to their life by creating a craft, eating a snack, playing a game, and experiencing the story through expressive arts, STEM and worship.

Camp Hope is a day camp that is passionate about growing leaders. This is one of the reasons that Camp Hope is one of the BEST ways to develop youth leaders. It's a vital part of what Camp Hope is all about!

Parents are invited to register their children online at www.messiahlc.org/camp-hope. For more information, call 281-890-3013.

Messiah Lutheran Church is a congregation of the Evangelical Lutheran Church in America (ELCA). Messiah is located at 11522 Telge Road, ½ mile north of Highway 290. Regular Sunday worship times are: 8 am—Traditions; 9:30 am—The Gathering; and 10:45 am—The Crossing. The Discovery Time (education) is 9:15-10:30 AM on Sundays. For more information, 281-890-3013 or www.messiahlc.org. All people are welcome at Messiah.

Millipedes

Millipedes are often mistaken for worms. While millipedes have elongated bodies similar to worms, they have lots of legs which worms lack. Millipedes have a long, cylindrical body, a pair of antennae and two pair of legs on each segment of their body. They often curl into a spiral as a way to protect themselves when threatened.

Millipedes live in moist environments such as soil, leaf litter, and compost piles, under mulch, rocks or wood. Millipedes most often feed on decaying organic matter, though some are carnivorous. They are not typically thought of as pests, but more of a nuisance although they may occasionally damage seedling plants by feeding on stems and leaves.

Large numbers of millipedes may move into structures after heavy rainfall or during periods of drought. If millipedes do wander indoors, they usually die quickly due to lack of moisture.

Tips to prevent millipedes from moving indoors:

- Move objects providing harborage (compost piles, firewood, stones) away from structures
- Create a band of gravel between the home foundation & landscape beds
- Adjust watering schedules if overwatering
- Turn mulch so it dries out
- Seal accessible areas where millipedes can move into the home- around doors & windows; pipe penetrations, etc.
- Ventilate crawl spaces to allow for air flow

For more information or help with identification, contact Wizzie Brown, Texas AgriLife Extension Service Program Specialist at 512.854.9600. Check out my blog at www.urban-ipm.blogspot.com

This work is supported by Crops Protection and Pest Management Competitive Grants Program [grant no. 2017-70006-27188 /project accession no. 1013905] from the USDA National Institute of Food and Agriculture.

The information given herein is for educational purposes only. Reference to commercial products or trade names is made with the understanding that no discrimination is intended and no endorsement by Texas A&M AgriLife Extension Service or the Texas A&M AgriLife Research is implied.

The Texas A&M AgriLife Extension Service provides equal access in its programs, activities, education and employment, without regard to race, color, sex, religion, national origin, disability, age, genetic information, veteran status, sexual orientation or gender identity.





PEEL, INC.

308 Meadowlark St. South
Lakeway, TX 78734

PRSR STD
U.S. POSTAGE
PAID
PEEL, INC.

MCE

YOU'VE SET YOUR GOALS, **NOW REACH THEM.**

Expand your
target audience in
**Memorial Creek
Estates** today.

Call 1.888.687.6444
or visit: www.peelinc.com



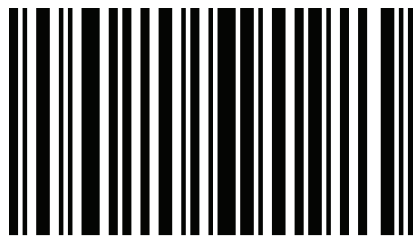
PEEL, INC.
community newsletters

FIRST MONTH
FREE

Unlimited "Best" Car Wash Membership*



Quick Quack
CAR WASH



8000251

*New memberships only

Requires activation fee. Expires 6/30/2019

   @quickquackhouston